

NICKY COOK PATTERNS  
& SHARON M OSBORNE

NICKY COOK  
PATTERNS



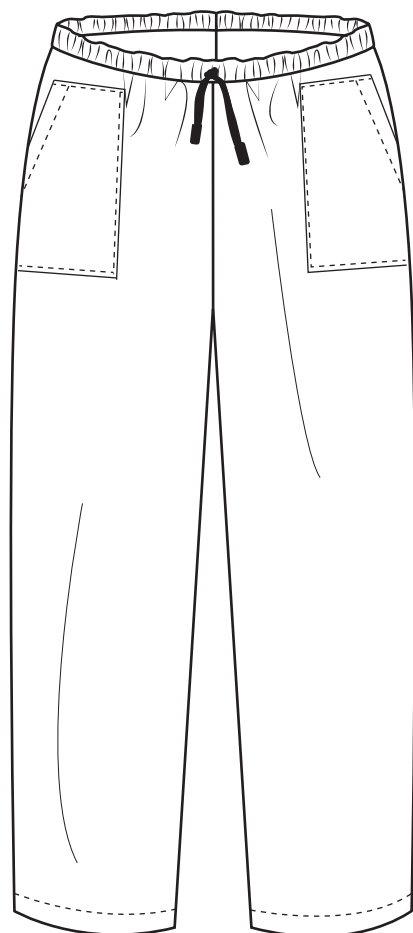
**STYLE:** EASY PATCH POCKET TROUSER

**SIZES:** XS-S-M-L-XL-XXL

**FABRIC:** COTTON OR POLY/COTTON TWILL  
OR MED-HEAVY WEIGHT POPLIN

**SEAM ALLOWANCE:** 1CM /  $\frac{3}{8}$ "  
**HEM:** 4CM / 1  $\frac{1}{2}$ " **ELASTIC:** 4CM / 1  $\frac{1}{2}$ " WIDE

## FLAT SKETCHES



CUT ELASTIC MEASUREMENT  
INCLUDED 1CM /  $\frac{3}{8}$ " SEAM

XS	68CM	26 $\frac{3}{4}$ "
S	74CM	29"
M	74CM	31 $\frac{1}{2}$ "
L	80CM	43"
XL	86CM	36 $\frac{1}{4}$ "
XXL	98CM	38 $\frac{1}{2}$ "